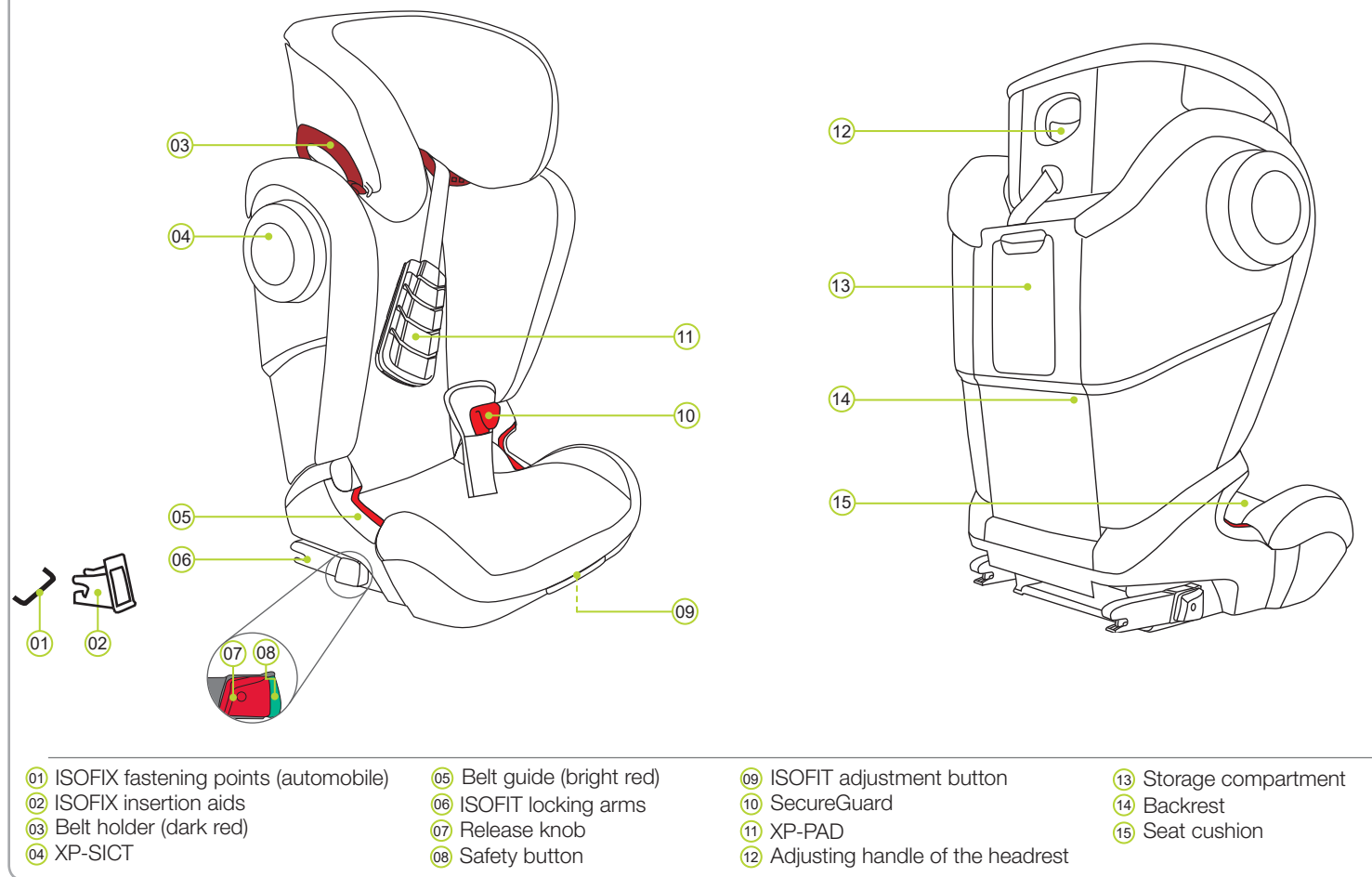


1. PRODUCT OVERVIEW



4. USE IN THE VEHICLE

Please observe the instructions for using children's restraining systems in the operating instructions of your vehicle. The seat can be used in vehicles with ISOFIX anchoring systems (see type list) and in vehicles with a 3-point belt.

Please find the information on the seats approved for child safety seats of the weight classes 15 to 36 kg in the operating instructions of your vehicle.

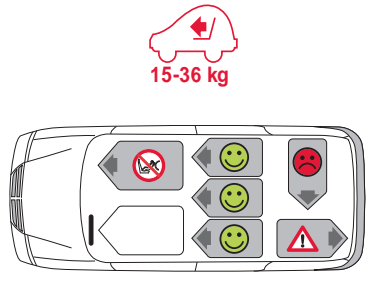
The KIDFIX III S is approved for two different methods of installation:

Symbol	Installation type	Approval type	Section
	with the ISOFIT locking arms on the ISOFIX fastening points in the vehicle. Observe the vehicle type list.	semi-universal a)	9A
	with the vehicle's 3-point seatbelt	universal	9B

a) This means that the child safety seat may only be used in vehicles that are listed in the vehicle type list enclosed. This type list is consistently kept up to date. The latest version can be obtained from us or from www.britax.com

You can use your child safety seat as follows:

In the direction of travel	Yes
Against the direction of travel	No ¹⁾
with 2-point belt	No
with 3-point belt ²⁾	Yes
with ISOFIX fastening points (between seat surface and backrest)	Yes
on front passenger seat	Yes ³⁾
on outer rear seat	Yes
on centre rear seat (with 3-point belt)	Yes ⁴⁾



- Use is permitted on a rearward-facing vehicle seat (e.g. in a van or minibus) only if the vehicle seat is also approved for use by adults. The seat may not be in the area of effect of an airbag.
- The safety belt must be approved to ECE R 16 or a comparable standard (see test label on belt with an "E" or "e" in a circle).
- If there is a front airbag: Slide the vehicle seat a long way back and refer to any instructions in vehicle owner's manual.
- Cannot be used if the vehicle seat is equipped with only a 2-point belt.

5. CARE AND MAINTENANCE

Please ensure that you only use the original BRITAX RÖMER replacement seat covers, as the seat cover is an integral part of the child safety seat and fulfils important functions to ensure the smooth operation of the system. Replacement seat covers are available from your dealer.

- The cover can be removed and washed with a mild detergent in the delicates programme of the washing machine (30 °C). Please observe the instructions on the washing label of the cover.
 - The plastic parts and the XP-PAD can be cleaned with a soap sud. Do not use any caustic cleaning agents (such as solvents).
- ⚠ DANGER!** The child seat must not be used without the seat cover.



- Removing the seat cover**
- Moving the headrest of the vehicle seat into the top position.
 - Unhook the cover hook (19) on the rear of the backrest.
 - Remove the top part of the cover and fold it forwards to the seat surface.
 - Unhook the cover hook (19) on the front of the backrest.
 - Pull the cover off of the seat surface.

- Removing the headrest cover**
- Unhook the cover loop (20) on the rear of the backrest.
 - Unhook the cover hook (19) on the front of the backrest.
 - Pull off the cover of the headrest (22).
- The cover can now be washed. Please observe the instructions on the washing label of the cover:



Re-fitting the cover
Proceed in reverse order to put on the cover.

2. INTRODUCTION

Thank you for choosing KIDFIX III S to keep your child safe through a new stage of their life.

In order to protect your child correctly, the KIDFIX III S must always be used and installed as described in these instructions.

If you have any further questions regarding its use, please feel free to contact us:

Britax Childcare
Britax Römer Kindersicherheit GmbH
Theodor-Heuss-Straße 9
D-89340 Leipheim
Germany
T.: +49 (0) 8221 3670 -199/-299
F.: +49 (0) 8221 3670 -210
E.: service.de@britax.com
www.britax-roemer.com

Britax Childcare
Britax Exelsior Limited
1 Churchill Way West
Andover
Hampshire SP10 3UW
T.: +44 (0) 1264 333343
F.: +44 (0) 1264 334146
E.: service.uk@britax.com
www.britax-roemer.com

These instructions use the following symbols stated below:

Symbol	Keyword	Explanation
	DANGER!	Risk of severe personal injury
	WARNING!	Risk of minor personal injury
	CAUTION!	Risk of material damage
	TIP:	Useful notes

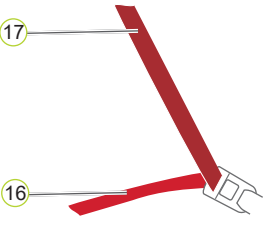
Instructions that follow a set sequence are numbered.

Example:

- Press the button...

Belt guide colours

For better differentiation, the two vehicle seat belts are highlighted in different colours. The diagonal seat belt (17) in dark red and the lap belt (16) in bright red. The colour of the belt guides on the child safety seat follows the same colour scheme.

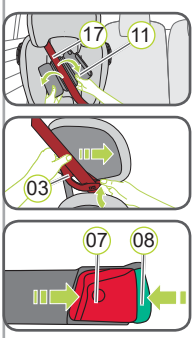


6. DISASSEMBLY AND DISPOSAL

UNFASTENING YOUR CHILD:

- To unfasten your child, use the release button of your vehicle seat buckle.
- ⓘ TIP!** The XP-PAD can remain applied for easier use on the diagonal belt of your vehicle, the diagonal belt must be retensioned before every journey; see: Section 10 step 12 [page II].

REMOVAL:



- Operate the release key of your vehicle seat buckle.
 - Open the XP-PAD (11) on the Velcro fastener and remove the diagonal belt (17).
 - Open the dark red belt holder (03) by pressing backwards the key on the belt holder (03) and unthreading the diagonal belt (17).
 - To release the ISOFIT fastening, release the green safety button (08) and the red release button (07) first on the one and then on the other side opposite on another.
- The child safety seat can now be removed.

⚠ DANGER! The child safety seat must always be secured when it is in the vehicle, even if no child is being transported.

DISPOSAL:

Please observe the waste disposal regulations in your country.

Disposal of packaging	Container for cardboard boxes
Seat cover	Residual waste, thermal utilisation
Plastic parts	According to the labelling in the corresponding container
Metal parts	Container for metals
Belt straps	Container for polyester
buckle and tongue	Residual waste

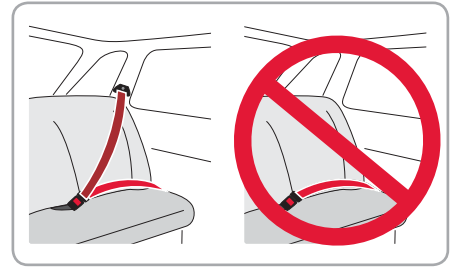
3. CERTIFICATION

BRITAX RÖMER Vehicle child safety seat	Testing and certification In accordance with ECE* R 44/04	
	Group	Body weight
KIDFIX III S	II+III	15 to 36 kg

*ECE = European Standard for Child Safety Equipment

The child safety seat has been designed, tested and certified according to the requirements of the European Standard for Child Safety Equipment (ECE R 44/04). The seal of approval E (in a circle) and the approval number are located on the orange approval label (sticker on the child safety seat).

- ⚠ DANGER!** This approval will be invalidated if you make any modifications to the child safety seat. Only the manufacturer is permitted to make modifications to the child safety seat. The child seat is approved for use both with and without XP-PAD / SecureGuard.
- ⚠ WARNING!** Use the KIDFIX III S exclusively for securing your child in your vehicle. It is in no way suitable as a seat or toy in the home.
- ⚠ DANGER!** Never secure your child or the child safety seat with a 2-point belt. If you secure your child in the child seat with only a 2-point belt, then in the event of an accident this may cause serious injuries to your child, possibly resulting in death.



15 kg - 36 kg
 (~4 Y - 12 Y)



KIDFIX III S

User instructions

GB



7. SAFETY NOTES

⚠ Please take the time to read these instructions carefully and keep them to hand in the intended storage compartment (13) on the child safety seat at all times! The instructions must be with the child safety seat if the latter is passed on to a third party.

⚠ DANGER! For the protection of your child:

- In the event of an accident with a collision speed of more than 10 km/h, the child safety seat may be damaged without the damage becoming immediately visible. In this case the child safety seat must be replaced. Please dispose of it properly.
- As a rule, have your child safety seat checked if it was damaged (e.g. if it falls on the ground).
- Regularly check all important parts for damage. Ensure that all mechanical parts, in particular, are fully functional.
- Never lubricate or oil parts of the child seat.
- Never leave your child unattended in the child seat in the vehicle.
- Only allow your child to enter and exit the vehicle on the pavement side.
- Protect the child safety seat from intensive direct sunlight when it is not in use. The child safety seat can get very hot in direct sunshine. Child skin is sensitive and could thereby be harmed.
- The more snugly the belt fits over your child's body, the better they will be protected. Therefore avoid putting thick clothes on your child under the belt.
- Take regular breaks on long journeys in order to give your child the opportunity to play around.
- Use on the rear seat: Move the front seat forward far enough that your child's feet cannot hit the backrest of the front seat (to prevent risk of injury).

⚠ DANGER! For the protection of all vehicle occupants:

- In the case of an emergency stop or an accident, unsecured persons or objects may cause injury to other vehicle occupants. Please always check that...
- the backrests of the vehicle seats are locked (i.e. that any foldable rear seat bench latch is engaged).
 - all heavy or sharp-edged objects in the vehicle (e.g. on the parcel shelf) are secured.
 - all persons in the vehicle have their seatbelts fastened.
 - the child safety seat is always secured when it is in the vehicle, even if no child is being transported.

⚠ WARNING! For your protection when handling the child seat:

- Never use the child safety seat free-standing, not even for test sitting.
- The backrest (14) may tip backward. Always place the child seat on the vehicle seat before having your child sit down in it.
- When swivelling up the backrest (14), nothing must come between the backrest (14) and the seat cushion (15). You or your child could pinch your fingers, injuring them.
- To avoid damage, ensure that the child safety seat is not jammed in between hard objects (car door, seat rails, etc.).
- Keep the child safety seat in a safe place when it is not in use. Do not place any heavy objects on the seat and do not store it directly next to sources of heat or in direct sunlight.

⚠ CAUTION! To protect your vehicle:

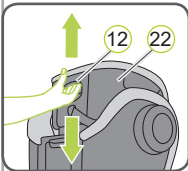
- Certain car seat covers made from more sensitive materials (e.g. velour, leather, etc.) may sustain signs of wear and tear when using child safety seats. For optimum protection of your car seat covers, we recommend using the BRITAX RÖMER car seat protector from our range of accessories.

8. ADJUSTING THE HEADREST

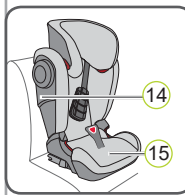
A correctly set headrest (22) ensures that the diagonal seat belt section (17) is optimally positioned, and gives your child optimum protection. The headrest (22) must be adjusted so that there is a space two fingers wide between the headrest (22) and your child's shoulders.

To adjust the height of the headrest to fit your child:

1. Reach into the adjustment handle (12) on the back of the headrest (22) and pull it towards you. This unlocks the headrest.
2. You can now move the unlocked headrest (22) to the desired height. As soon as you release the adjustment handle (12), the headrest (22) will lock into place.
3. Place the child safety seat on the vehicle seat.
4. Have your child sit down in the child safety seat and check the height. Repeat the procedure until the headrest (22) has the correct height.



9. INSTALLATION



Adjusting the backrest:

The backrest (14) is connected to the seat cushion (15) by an articulated axis. The backrest (14) of the child seat can be adjusted to any inclination of the vehicle seat. Please know that optimal protection is guaranteed only if the vehicle seat is in an upright position.

A With ISOFIT + 3-point belt

The KIDFIX III S is installed permanently in the vehicle with the ISOFIT locking arms.

Your child is then buckled into the child seat with the vehicle's 3-point seatbelt.

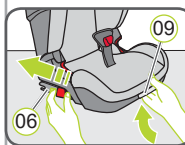


1. If your vehicle is not fitted with ISOFIX insertion aids by standard, clamp the two insertion aids (02), with are included in the scope of delivery of the seat*, with the section pointing upwards to the two ISOFIX fastening points (01) of your vehicle.

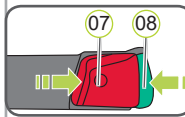
ⓘ TIP! The ISOFIX fastening points are located between the surface and the backrest of the vehicle seat.

* The insertion aids facilitate the installation of the child safety seat with the use of the ISOFIX fastening points and prevent damage to the car seat covers. As long as they are not used, remove them and keep them in a safe place. For vehicles with foldable a backrest, the insertion aids need to be removed before folding the backrest. Any problems occurring usually come from soiling or external objects on the insertion aids and on the hook. Remove soiling or external objects to rectify such problems.

2. Moving the headrest of the vehicle seat into the top position.
3. Carry out the steps in Section 8 "ADJUSTING THE HEADREST".



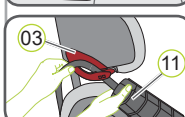
4. Hold the ISOFIT settings button (09) down and push the ISOFIT locking arms (06) out in full.



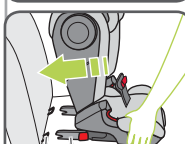
5. Push the green safety button (08) and the red release button (07) on both sides of the seat towards each other. This ensures that both hooks on the ISOFIT locking arms (06) are open and ready to use.



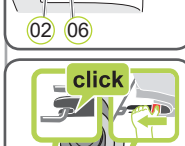
6. Place the XP-PAD (11) in the side of the child safety seat closer to the vehicle door.



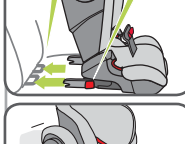
7. Guide the elastic holding strap of the XP-PAD (11) into the dark red belt holder (03) of the headrest (22) until it lies completely in the belt holder (03) and is not twisted.



8. Place the child safety seat in driving direction on a vehicle seat approved for use. Ensure that the backrest (14) is flush with the backrest of the vehicle seat.

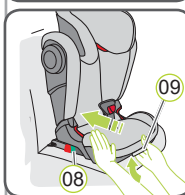


9. Position the two ISOFIT locking arms (06) directly in front of the two insertion aids (02).

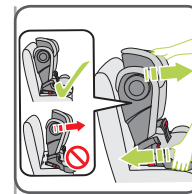


10. Push both ISOFIT locking arms (06) into the insert guides (02) until the ISOFIT locking arms (06) engage on both sides with a clicking sound.

⚠ DANGER! The green safety button (08) must be visible on both sides so that the child safety seat is correctly fastened.



11. Hold the ISOFIT settings button (09) down and push the child safety seat as far back as possible.



12. Shake the child safety seat to ensure that it is securely fastened and check again the fastening buttons (08) to ensure that both are fully green.
13. Carry out the steps in Section 10 "SECURING YOUR CHILD".

⚠ For the safety of your child, before every journey in the car check that...

- ▶ the child safety seat is slotted in on both sides with the ISOFIT locking arms (06) in the ISOFIT fastening points (01) and both safety buttons (08) are fully green;
- ▶ the child safety seat is securely fastened;
- ▶ the lap belt (16) runs in the bright red belt guides on both sides of the seat cushion (05);
- ▶ the lap belt (16) runs through the bright red SecureGuard (10);
- ▶ the diagonal seat belt section (17) on the side of the vehicle seatbelt buckle (18) also runs through the light red belt guide (05) of the seat cushion;
- ▶ the diagonal seat belt section (17) runs through the dark red belt holder (03) of the headrest;
- ▶ XP-PAD (11) and XP-SICT (04) are correctly installed and used;
- ▶ the diagonal seat belt section (17) runs diagonally backward;
- ▶ the straps are tight and not twisted;
- ▶ the seatbelt buckle (18) must not be positioned on the red belt guide (05) in the seat cushion.

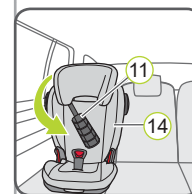
⚠ DANGER! If your child try to use to open the vehicle belt buckle (18) or introduce the diagonal belt section (17) into the bright red SecureGuard (10), stop as soon as possible. Check whether the child safety seat is correctly fastened and ensure that your child is correctly secured. Explain to your child the dangers associated with his actions.

UNFASTENING YOUR CHILD AND REMOVAL:

To unfasten your child or to remove the child safety seat, observe the steps in Section 6 "REMOVAL AND DISPOSAL" [PAGE I]

B With 3-point belt

The KIDFIX III S is not installed permanently in the vehicle. It is simply secured together with your child using the vehicle's 3-point seatbelt.



1. Carry out the steps in Section 8 "ADJUSTING THE HEADREST".
2. Place the XP-PAD (11) on the side of the child safety seat closer to the vehicle door.
3. Guide the elastic holding strap of the XP-PAD (11) into the dark red belt holder (03) of the headrest (22) until it lies completely in the belt holder (03) and is not twisted.
4. Place the child seat on the vehicle seat. Ensure that the backrest (14) is flush with the backrest of the vehicle seat.



5. Carry out the steps in Section 10 "SECURING YOUR CHILD".
- ⓘ Tip!** If the head restraint of the vehicle seat prevents the child seat from being fastened in place properly, it should be removed (see vehicle operating manual). After removing the head restraint, secure it in a suitable place in the vehicle so that it cannot be thrown around.

⚠ For the safety of your child, before every journey in the car check that...

- ▶ the child safety seat is securely fastened;
- ▶ the lap belt (16) runs in the bright red belt guides on both sides of the seat cushion (05);
- ▶ the lap belt (16) runs through the bright red SecureGuard (10);
- ▶ the diagonal seat belt section (17) on the side of the vehicle seatbelt buckle (18) also runs through the light red belt guide (05) of the seat cushion;
- ▶ the diagonal seat belt section (17) runs through the dark red belt holder (03) of the headrest;
- ▶ the diagonal seat belt section (17) runs diagonally backward;
- ▶ the straps are tight and not twisted;
- ▶ XP-PAD (11) and XP-SICT (04) are correctly installed and used;
- ▶ the seatbelt buckle (18) must not be positioned on the red belt guide (05) in the seat cushion.

⚠ DANGER! If your child try to use to open the vehicle belt buckle (18) or introduce the diagonal belt section (17) into the bright red SecureGuard (10), stop as soon as possible. Check whether the child safety seat is correctly fastened and ensure that your child is correctly secured. Explain to your child the dangers associated with his actions.

UNFASTENING YOUR CHILD AND REMOVAL:

To unfasten your child or to remove the child safety seat, observe the steps in Section 6 "REMOVAL AND DISPOSAL" [PAGE I]

10. SECURING YOUR CHILD



1. Unscrew the XP-SICT (04) anti-clockwise (on the side closer to the vehicle door) until it has a distance of 5 mm to the vehicle door or has been unscrewed to the maximum.



2. Let your child sit in the child safety seat and place the XP-PAD (11) over the chest area of your child. If you find that the retraction force of the 3-point seat belt is not enough to ensure that the seat belt is tight (against the child), the child seat can be used without XP-PAD (11); see Chapter 3 "APPROVAL" [PAGE I].



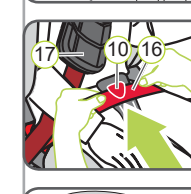
3. Pull out the vehicle belt and guide it in front of your child to the vehicle seat buckle (18). **⚠ DANGER!** Ensure the vehicle belt is not twisted, as otherwise the full protective effect of the retaining system is not ensured.



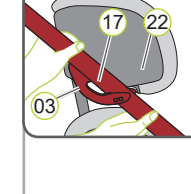
4. Engage the buckle tongue in the vehicle seat buckle (18) with a CLICK!



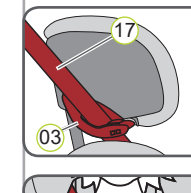
5. Place the diagonal seat belt section (17) and lap belt section (16) on the side of the vehicle seatbelt buckle (18) into the light red belt guide (05) of the seat cushion. **⚠ DANGER!** The vehicle seatbelt buckle must not be positioned between the light red belt guide and the armrest. (18) (05)



6. Also place the lap belt section (16) on the other side of the seat cushion in the light red belt guide (05). **⚠ DANGER!** The lap belt section (16) must lie as low as possible over your child's hips on both sides.



7. Guide the lap belt section (16) into the bright red SecureGuard (10). **⚠ DANGER!** Do not guide the diagonal the section (17) into the bright red SecureGuard (10).



8. Guide the diagonal seat belt section (17) into the dark red belt holder (03) of the headrest (22) until it lies completely in the belt holder (03) and is not twisted. **ⓘ Tip!** If the backrest (14) conceals the belt holder (03), you can adjust the headrest (22) upwards. The diagonal seat belt section (17) can now be easily inserted. Now return the headrest (22) to the proper height.



9. Ensure that the diagonal belt (17) runs over the collarbone of your child and is not on the neck and that the key on the belt holder is (03) fully closed. **ⓘ Tip!** You can still adjust the height of the headrest (22) again here in the vehicle.



10. Open the Velcro fastener on the XP-PAD (11) and fold the top part of the XP-PAD (11) to the side.



11. Insert the diagonal belt (17) in the die nubby surface of the XP-PAD (11).

12. Close the XP-PAD (11) again by folding the folded part back and closing the Velcro fastener.

⚠ DANGER! The diagonal seat belt section (17) must run diagonally backward. You can adjust the course of the belt with your vehicle's adjustable belt deflector.

⚠ DANGER! The diagonal belt (17) must never be directed forwards to the belt deflector on the vehicle. In this case, use the child safety seat on the back seat only.

13. Tighten the vehicle seat belt by pulling on the diagonal seat belt section (17).

14. Observe the further steps of the relevant installation type.